

# Opening PDF files in PhotoScore

---

## Introduction

A huge quantity of public domain music is available on the Internet in the form of Adobe Acrobat PDF (Portable Document Format) files. PDF files are useful because they retain the precise graphical data of the original file in a format that can be viewed on all computers, provided you have the Adobe Acrobat Reader installed. Acrobat Reader is free, and can be downloaded from Adobe's web site at <http://www.adobe.com/products/acrobat/readstep.html> -- and it is also included on your Sibelius 2 CD-ROM, so you can install it from there if you like.

PDF files can be used to graphically represent any kind of document, whether it originated in a word processor, a spreadsheet, a desktop publishing package, or even a music notation program. It's best to think of PDF files as a special kind of graphics file -- in many ways, no different from the kind of graphics file that you get when you scan a photograph or even a piece of music.

So a PDF file is a bit like a piece of music you have in paper form -- the only way to get the musical data out of it is to scan it using a program like PhotoScore. However, because the PDF file is already in electronic format, all you have to do is convert it into a format suitable for opening in PhotoScore, bypassing the physical step of scanning the music altogether.

You will need to install some extra software on your computer to achieve this... so let's get started. This tutorial assumes you are using a Windows PC.

## The overall process

The process of opening PDF files in PhotoScore is as follows:

- Convert the PDF file into a series of TIFF files, one for each page
- Convert the TIFF files into BMP files, suitable for opening in PhotoScore
- Open the BMP files in PhotoScore, 'read' them, and then send them to Sibelius for editing.

## What you will need

Firstly, make sure you have the latest version of PhotoScore Lite or PhotoScore Professional installed on your computer.

- You can download the latest version of PhotoScore Lite from <http://www.sibelius.com/helpcenter/upgrades.html>
- For details of upgrades to PhotoScore Professional, see <http://www.neuratron.com>

Provided you are using at least version 2 of PhotoScore Lite or version 1.86 of PhotoScore Professional, you should be all set.

Secondly, you will need two pieces of software to convert PDF files into graphics files suitable for opening in PhotoScore.

- Konvertor\_pdf2xxx -- download this from [http://www.logipole.com/konvertor\\_batch\\_us.htm](http://www.logipole.com/konvertor_batch_us.htm). There is a long list of different graphics converter programs on this page, so be sure you download the right one!
- Advanced Batch Converter -- download this from <http://www.gold-software.com/download.shtml#abc>.

Both of these programs are *shareware*, which means that they are free to download, and you can try them out on your computer for a certain period. If you wish to continue using these programs after that period has ended, you are obliged to register the software by paying the author a fee. If you find that you use these programs regularly, please support the authors of the software by registering them.

## Installing Konvertor\_pdf2xxx

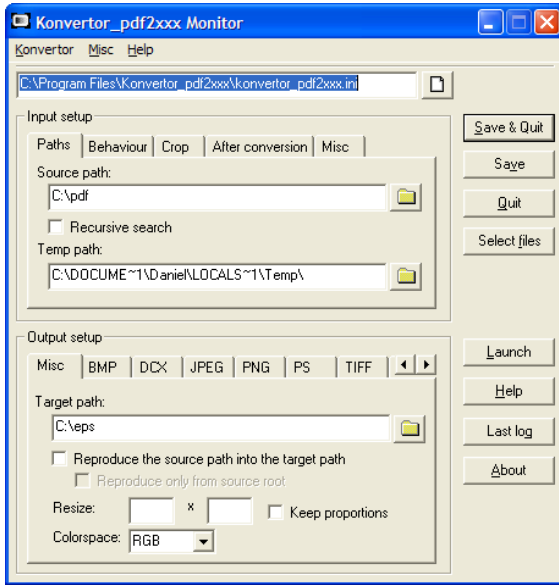
- The file you have downloaded is a ZIP archive. If you are using Windows Me or Windows XP, you can simply right-click on the ZIP archive and choose **Extract all** to extract the files; if you are using another version of Windows, use a ZIP utility such as WinZip (<http://www.winzip.com>) or InfoZip (<http://www.info-zip.org/pub/infozip/>).
- Once you have extracted the files, double-click the **install.exe** icon and follow the instructions on the screen to install the program.
- When the program has been installed, click **Start ▶ Programs ▶ Konvertor\_pdf2xxx ▶ Setup** to run the program

## Installing Advanced Batch Converter

- See the first step in **Installing Konvertor\_pdf2xxx** above to find out how to extract the files from the ZIP archive you have downloaded.
- Double-click the **setup.exe** icon and follow the instructions on the screen to install the program.
- When the program has been installed, click **Start ▶ Programs ▶ Advanced Batch Converter ▶ Advanced Batch Converter v3.4** to run the program.

### Configuring Konvertor\_pdf2xxx

- Run the program by clicking **Start** ▶ **Programs** ▶ **Konvertor\_pdf2xxx** ▶ **Setup**
- A dialog will appear, looking like this:



- Click the **Misc** tab at the *top* of the dialog and set the **Output format** to **TIFF**. When you do, the **TIFF** tab at the *bottom* of the dialog will become selected.
- In the **TIFF** tab at the *bottom* of the dialog, set both **Vertical Resolution** and **Horizontal Resolution** to **300**.
- On the **Misc** tab at the *bottom* of the dialog, set **Colorspace** to **GRAY**.

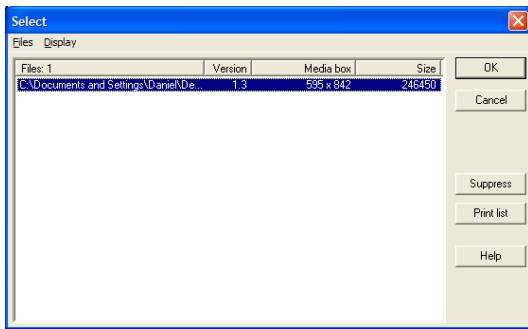
You can alter the other settings as you wish, but we recommend the following:

- On the **Paths** tab at the *top* of the dialog, the **Source path** is the directory where you should put the PDF file(s) you want to convert into graphic files. We recommend creating a folder called e.g. **PDF** somewhere prominent, such as on your desktop. You can leave the **Temp path** as it is (the program generates temporary files as it works, but deletes them afterwards).
- Leave the settings on the **Behaviour** tab alone – this is used for periodically converting new PDF files that you drop into your PDF folder, which you don't need to do.
- Leave the settings on the **Crop** tab alone – this is used for cropping the dimensions of the PDF file, which you don't need to do.
- On the **After conversion** tab, we recommend you switch on the **Nothing particular** radio button. Otherwise, the program will attempt to move the PDF file.
- On the **Misc** tab at the *top* of the dialog, you should ensure that the **Output format** is set to **TIFF** (as described above), but if you know that you only want certain pages of the PDF file to be converted into TIFF files, you can specify them here.
- On the **Misc** tab at the *bottom* of the dialog, set the **Target path** to the directory where you want to put the converted TIFF files. We recommend creating a folder called e.g. **Output** somewhere prominent, such as on your desktop.

Once you have set the options as you want them, click the **Save** button on the right of the dialog.

### Converting a PDF file into a series of TIFF files using Konvertor\_pdf2xxx

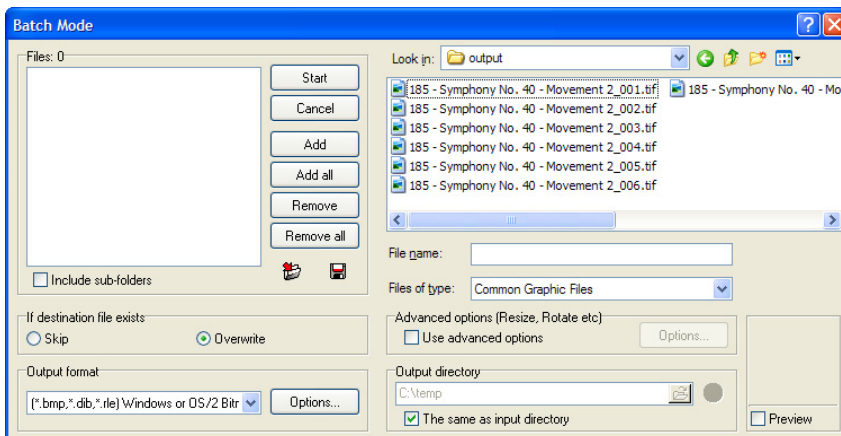
- Move the PDF file you want to convert into the **PDF** folder on your desktop.
- Run Konvertor\_pdf2xxx
- Click the **Select files** button on the right of the dialog and select the PDF file you want to convert:



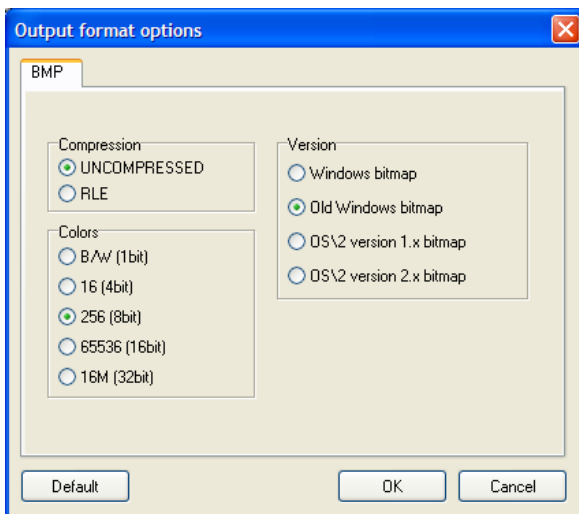
- Click **OK**
- In the main dialog, click **Launch** to start the conversion. A progress bar will appear.
- Once the conversion process is finished, a dialog will appear asking if you want to view the log file: click **No**.
- Click **Quit** to exit the program.
- Double-click the **Output** folder on your desktop, and you should see a number of TIFF files inside, one for each page of the PDF

### Configuring Advanced Batch Converter

- Run the program by clicking **Start** ▶ **Programs** ▶ **Advanced Batch Converter** ▶ **Advanced Batch Converter v3.4**
- Choose **File** ▶ **Batch Mode** (shortcut **Ctrl+B**) and the following dialog will appear:



- Switch off the **Preview** checkbox in the bottom right-hand corner, as this option greatly slows down the operation of the program when working with large files
- Under **Output directory**, switch on **The same as input directory**
- Under **Output format**, choose **(\*.bmp, \*.dib, \*.rle) Windows or OS/2 Bitmap**, and click the **Options** button.
- Set the options in the **Output format options** dialog as follows:



then click **OK**.

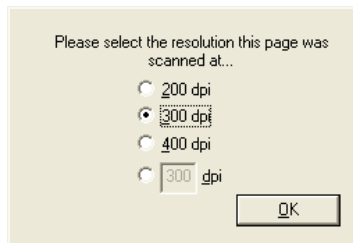
- When you have set all the options as above, close the window using the little cross icon at the far right of the menu bar.

### Converting TIFF files into BMP files using Advanced Batch Converter



- First, follow the instructions in **Converting a PDF file into a series of TIFF files using Konvertor\_pdf2xxx** above to generate the TIFF files
- Run Advanced Batch Converter
- Choose **File ▶ Batch Mode** (shortcut **Ctrl+B**)
- In the large file area on the right-hand side of the dialog, navigate to the **Output** folder on your desktop.
- Select the TIFF files you want to convert by highlighting them with the mouse.
- Click the **Add** button on the left of the dialog and the selected files will be added to the list on the left of the dialog
- Click the **Start** button at the top of the dialog, and the file conversion will begin.
- Once the conversion is complete, quit Advanced Batch Converter.

### Opening the BMP files in PhotoScore

- Run PhotoScore Lite or PhotoScore Professional
- Choose **File ▶ Open** (shortcut **Ctrl+O**)
- Navigate to the **Output** folder on your desktop
- Select the first file in the list and click **Open**
- PhotoScore will ask you the resolution that the page was scanned at



It should correctly detect **300dpi**; if not, select that option and click **OK**.

- PhotoScore will then analyse the image and open it after a few seconds
- Repeat the above for all the other pages in the **Output** folder
- Once you have opened all of the pages, click the  icon on PhotoScore's toolbar repeatedly to go back to the first page of the score
- Click the  **Read this page** button on the toolbar to begin reading the pages
- Now follow the instructions in the **Scanning** section of your Sibelius User Guide for details of how to edit any mistakes and send the completed score to Sibelius for transposing, printing and so on.

### A word for the curious

At this stage, you may be wondering why it is necessary to convert first to TIFF and then to BMP using two different programs: "why not just convert directly to BMP in Konvertor\_pdf2xxx?", I hear you ask. The answer is that PhotoScore only opens a particular kind of BMP file, the kind called (in Advanced Batch Converter) 'Old Windows bitmap', and Konvertor\_pdf2xxx only saves files in the newer BMP format. So now you know!